

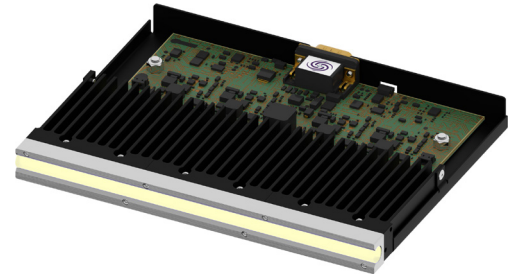
FireEdge™ FE100

Product Specifications

Phoseon LED SLM™ Technology

Phoseon Technology is the world leader in providing UV LED solutions for commercial and industrial applications. Phoseon's products deliver maximum UV energy, high performance, and real-world reliability for UV curing of inks, coatings and adhesives.

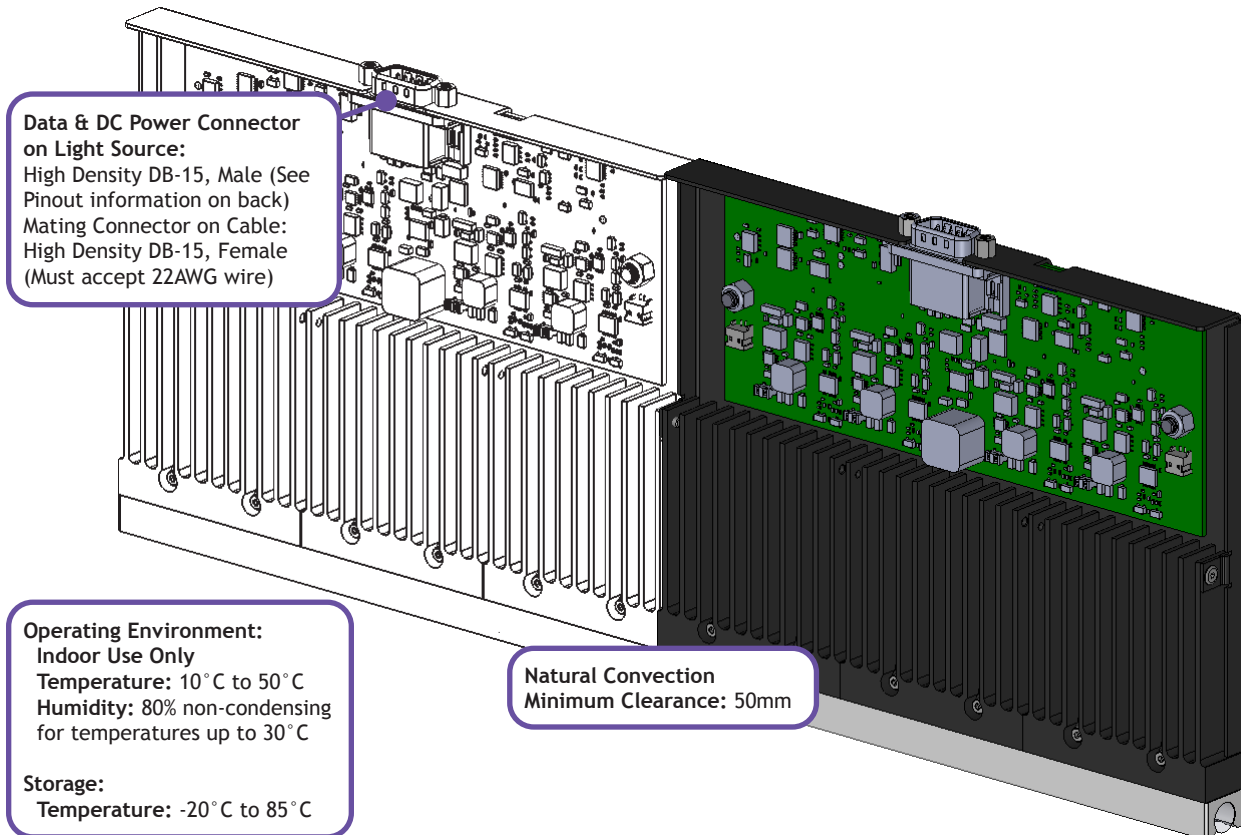
The FireEdge™ FE100 is an innovative UV LED source for commercial inkjet pinning applications. The FE100 is cooled by natural convection, with no internal fans. The elimination of cooling fans results in a thinner, more reliable curing source.



Performance

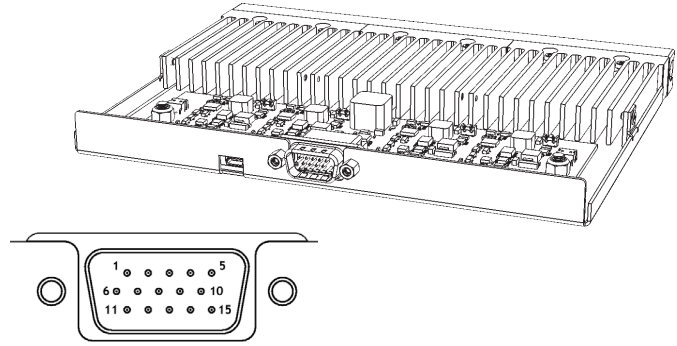
	385, 395, 405nm				365nm			
Peak Irradiance	2 W/cm ²				1 W/cm ²			
Emitting Window (mm)	80x10	120x10	180x10	240x10	80x10	120x10	180x10	240x10
48Vdc Power In (Max)	34W / 0.7A	50W / 1.1A	75W / 1.6A	100W / 2.1A	34W / 0.7A	50W / 1.1A	75W / 1.6A	100W / 2.1A

Light Source Setup



PLC Interface

- 2 **Intensity Control: (Voltage Input)**
0.5VC = 5% of full power, 10V = 100% of full power
The internal resistive load on this Pin is 11kΩ
 - 3 **Enable High: (24V PLC Input)**
0 to 4V (ground/open input) = OFF or 16 to 24V = ON
The internal resistive load on this Pin is 110kΩ
 - 5 **Lamp Ready: (24V PLC Output)**
0 to 4V = Not Ready or 6 to 24V = Lamp Ready
The external resistive load on this Pin must be $\geq 3k\Omega$
The NOT Ready state is triggered by:
Insufficient DC Input voltage
Excessive internal temperature
- 1, 6, 11, 12 +48Vdc Input
8, 9, 10, 14, 15 Ground (+48Vdc Return)



Dimensions

Units of measurement: mm

FE100				
UV Emitting Window	80x10	120x10	180x10	240x10
Length (L)	138	138	138	138
Width (W)	81.3	121.4	181.6	241.8
Height (H)	16	16	16	16
Weight (kg)	TBD	TBD	0.4	TBD
# Mounting Points* (1 side only)	2	2	2	3
Distance Between Mounting Points	55	77.0	137.2	186.4
Mounting Points: Distance to Glass	60.5	42.1	42.1	35.8/61.2
Overall Dimensions (LxWxH)	81.3x138x16	121.4x138x16	181.6x138x16	241.8x138x16

*Mounting points vary depending on window size. See Control Drawings for specific locations.

